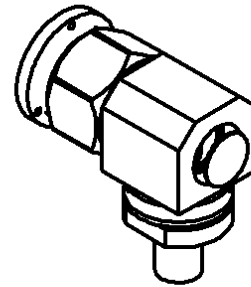
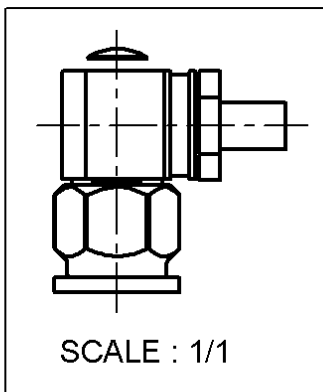
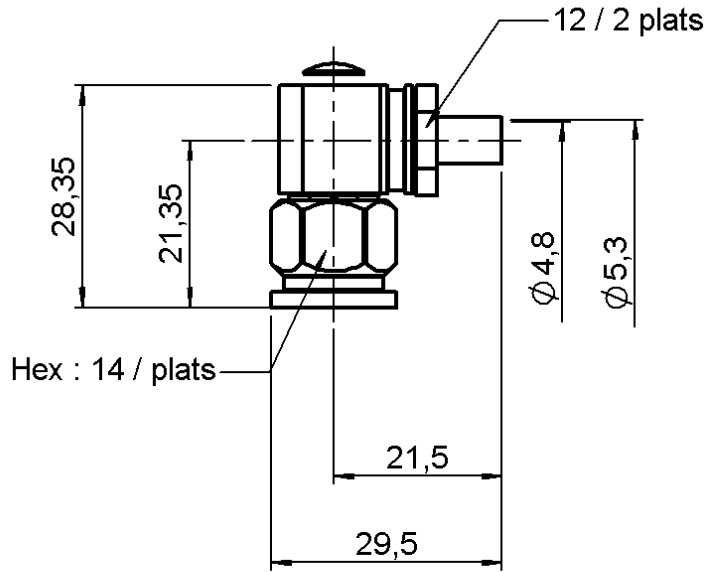


RIGHT ANGLE PLUG SOLDER TYPE

R143.195.701

CABLE SHF 5

Series : TNC-18



All dimensions are in mm.



COMPONENTS	MATERIALS	PLATINGS (µm)
BODY	STAINLESS STEEL (316L)	PASSIVATED .
CENTER CONTACT	BRASS	GOLD 1.3 OVER COPPER 2.5
OUTER CONTACT	-	-
INSULATOR	PTFE	-
GASKET	SILICONE RUBBER	-
OTHERS PARTS	ST. STEEL (316L) , BRASS	GOLD , PASSIVATED
.	.	.
.	.	.

Issue : 0320 A

In the effort to improve our products, we reserve the right to make changes judged to be necessary.



RIGHT ANGLE PLUG SOLDER TYPE

R143.195.701

CABLE SHF 5

Series : TNC-18

PACKAGING

Standard	Unit	Other
100	'W' option	Contact us

SPECIFICATION

ELECTRICAL CHARACTERISTICS

Impedance		50 Ω
Frequency		DC-2 GHz
VSWR	1.15 +	0.025 x F(GHz) Maxi
Insertion loss		0.1 √F(GHz) dB Maxi
RF leakage	- (57 - F(GHz)) dB Maxi
Voltage rating		500 Veff Maxi
Dielectric withstanding voltage		1500 Veff mini
Insulation resistance		5000 MΩ mini

CABLE ASSEMBLY

Stripping	a	b	c	d	e	f
mm	0.00	0.00	0.00	0.00	0.00	0.00

Assembly instruction :

Recommended cable(s)

MECHANICAL CHARACTERISTICS

Center contact retention		
Axial force – Mating end		27 N mini
Axial force – Opposite end		27 N mini
Torque		2.8 N.cm mini

Characteristics indicated on this data sheet are those that can be achieved with the highest performance cable. Intrinsic limitations of the cable may diminish the performance of the assembly

Cable retention

- pull off	40 N mini
- torque	NA N.cm

TOOLING

Recommended torque		
Mating		330 N.cm
Panel nut		NA N.cm
Clamp nut		150 N.cm
A/F clamp nut		12.000 mm

Part Number	Description	Hexagon
.	.	.

OTHERS CHARACTERISTICS

Mating life		500 Cycles mini
Weight		35.000 g

ENVIRONMENTAL

Operating temperature		-65/+165 °C
Hermetic seal		NA Atm.cm3/s
Panel leakage		NA

Issue : 0320 A

In the effort to improve our products, we reserve the right to make changes judged to be necessary.

